



Welcome to MIE!

This flyer contains important and useful information for foreign residents living in Mie. We hope you will use this information if you find yourself in need of assistance. Mie is here to help!

*Information included in this flyer is current as of November 2025.

Announcements from Mie are available in 7 languages.

(Announcements will be available in eight languages beginning in April 2026)



MieInfo



Life in Japan

Immigration Services Agency Guidebook on Living and Working

This guidebook provides information to help foreign residents live in Japan with greater peace of mind. It includes important rules about work, money, and more.

- Available in 19 languages
(including an Easy Japanese version)



Immigration Services Agency Orientation Videos for Daily Life in Japan

These videos explain rules to help foreign residents live and work in Japan with greater peace of mind.

- Available in 17 languages



Emergency/Disaster

BOSAIMIE.jp

Get information about heavy rain, typhoons, earthquakes, tsunamis, and other disasters.

- Available in 8 languages



Mie Multilingual Disaster Support Center

In the event of a major earthquake or tsunami, the Mie Multilingual Disaster Support Center will translate and send out necessary information. Advice is available free of charge if you need assistance during a disaster.

Phone: 080-3300-8077 (free of charge)

Email: saigai.tagengo.mie@gmail.com

Languages: English, Easy Japanese, Portuguese, Vietnamese, Spanish



Illness/Injury

Mie Medical Network

Find hospitals, clinics, and pharmacies in your neighborhood.

- Available in 5 languages



Mie Children Medical Hotline

A child coming down with a fever on a holiday or in the evening is always a concern for parents. If your child becomes ill or injured, call the hotline for advice free of charge.

Phone: #8000 (free of charge)

- Available in 22 languages



Learning Japanese

Ministry of Education, Culture, Sports, Science and Technology TSUNAHIRO

Videos are available for foreign residents to practice and learn Japanese for everyday life. Use a computer, smartphone, or other device to watch these videos at any time.

- Available in 19 languages



Mie International Exchange Foundation Japanese Language Class Map

Find Japanese language classes near your home.

- Multilingual support



Consult if you need assistance!

Mie Foreign Resident Consultation Support Center (MieCo)



080-3300-8077 (Free consultations)



Learn more here ▲

Available hours 9:00 AM to 4:00 PM

Available days Monday through Friday (not available on weekends, public holidays, or the New Year's holiday)

Languages supported English, Japanese, Portuguese, Spanish, Filipino, Chinese, Korean, Vietnamese, Nepalese, Indonesian, Thai

Consult with a specialist



Legal issues



Residence status



Mental health



Consult with a lawyer, Nagoya Regional Immigration Services Bureau staff, or a clinical psychologist free of charge.

Consultations are only available on certain days.

Please call to make a reservation.

Mie Disaster Prevention Application

Use the map to locate where you should evacuate to in the event of a disaster. View Hazard Maps, which indicate areas at risk from earthquakes, tsunamis, and typhoons.

● Available in 8 languages



iOS



Android

Apps to
enhance your
life in Japan

NHK WORLD-JAPAN

Get news from Japan and around the world. Information on earthquakes, tsunamis, and other disasters is sent straight to your smartphone.

● Multilingual support



iOS



Android

Safety tips

Information from the government on disasters is sent straight to your smartphone. Learn useful information about what to do in case of an earthquake or tsunami.

● Available in 15 languages



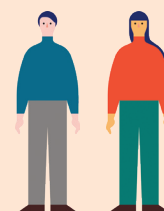
iOS



Android

VoiceTra

Translate yourself into 31 languages. This app is a great tool when talking to people who speak different languages.



iOS



Android